



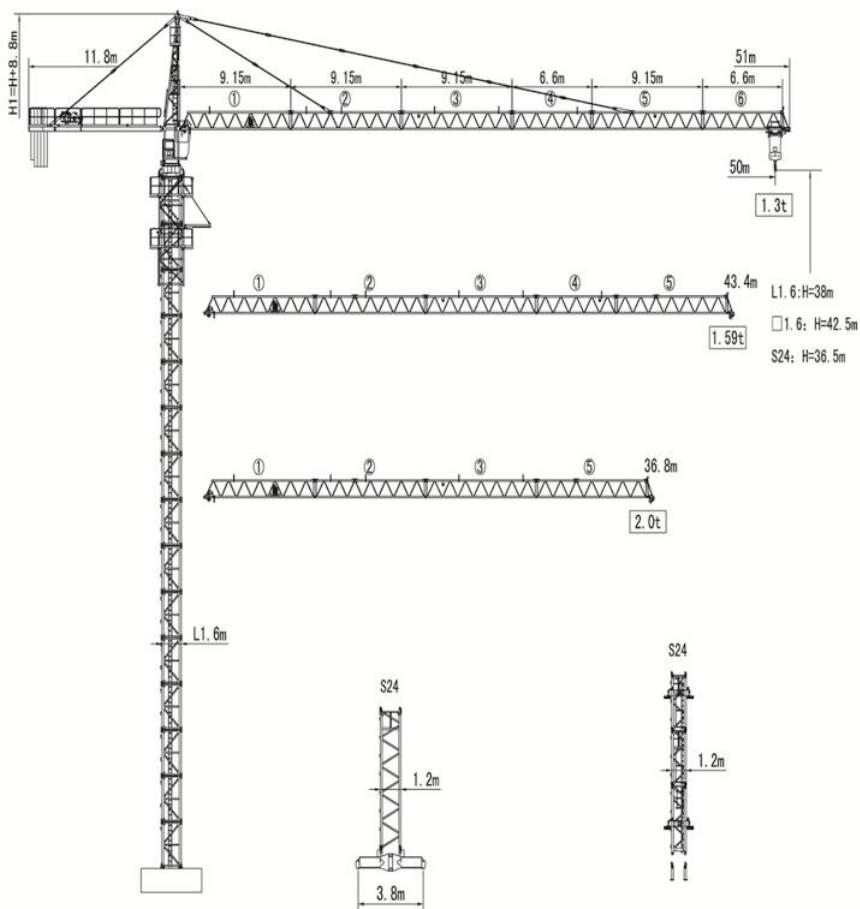
塔帽式塔式起重机 设备配置与技术参数

QTZ63(TC5013A)

本数据仅供参考，如有更改，恕不另行通知

This data is for informational purposes only, and is subject to change without prior notice

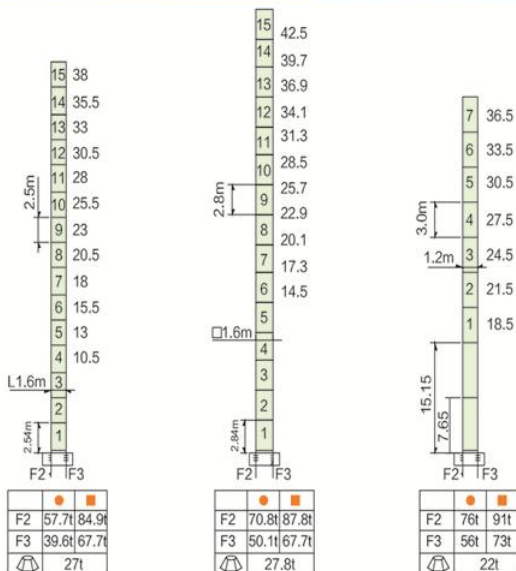
外形尺寸 Outline Dimensions



载荷特性表 Load Diagrams 5t

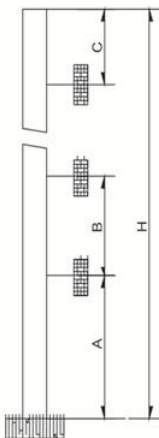
| R(m) | Fall | $R_{C(max)}$ | $C_{max(0)}$ | 15 | 20 | 25 | 30 | 35 | 36.8 | 40 | 43.4 | 45 | 50 |
|-------|------|--------------|--------------|-----|------|------|------|------|------|------|------|------|------|
| 50m | | 16.2 | 5.0 | 5.0 | 3.94 | 3.04 | 2.41 | 2.01 | 1.89 | 1.70 | 1.53 | 1.45 | 1.26 |
| | | 29.5 | 2.5 | 2.5 | 2.5 | 2.5 | 2.45 | 2.04 | 1.92 | 1.73 | 1.56 | 1.49 | 1.3 |
| 43.4m | | 16.5 | 5.0 | 5.0 | 4.01 | 3.1 | 2.48 | 2.05 | 1.93 | 1.74 | 1.56 | | |
| | | 30 | 2.5 | 2.5 | 2.5 | 2.5 | 2.5 | 2.08 | 1.96 | 1.77 | 1.59 | | |
| 36.8m | | 16.8 | 5.0 | 5.0 | 4.09 | 3.16 | 2.54 | 2.1 | 1.97 | | | | |
| | | 30.5 | 2.5 | 2.5 | 2.5 | 2.5 | 2.5 | 2.12 | 2.0 | | | | |

塔身截面 Masts



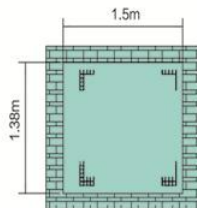
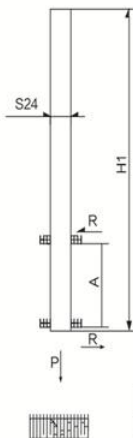
- 工作状态支反力 Reactions in service
- 非工作状态支反力 Reactions out of service
- ⚖️ 不含平衡重及压重塔机重量 Total weight of free standing crane (exclude Counter weight & ballast)

附着位置及塔机高度 Anchorage



| Mast | A | B | C | H |
|------|-------|-------|-------|----------------|
| L1.6 | 28.8m | 17.5m | 24m | 140m >140m* |
| □1.6 | 32.2m | 19.6m | 27m | 140m >140m* |
| S24 | 31.6m | 15m | 20.8m | 140m >140m* |

附着道数: Number of tie collar=(H-A-C)/B+1



| | H1 | A | R | P |
|-----|-------|-------|-------|-----|
| S24 | 30.7m | 7-15m | 12.5t | 38t |

机构 Mechanisms 5t

| 名称 | 机构代号 | 工作速度 (m/min) | | 起重量(t) | 容绳量(m) | 电机功率 |
|--------------------|-----------------------|--------------|------|--------|--------------|---------|
| 起升 Hoisting | 18JLD13☆ | 双绳 2 fall | 10 | 2.5 | 280 >280* | 18/18/5 |
| | | | 30 | 2.5 | | |
| | | | 60 | 1.25 | | |
| | | 四绳 4 fall | 5 | 5.0 | | |
| | | | 15 | 5.0 | | |
| | | | 30 | 2.5 | | |
| | 15LVF13 | 双绳 2 fall | 0-30 | 2.5 | 220 >220* | 15 |
| | | | 0-60 | 1.25 | | |
| | | 四绳 4 fall | 0-15 | 5.0 | | |
| | | | 0-30 | 2.5 | | |
| 变幅机构 Trolleying | BE2450☆ | 40/20 | | | 2.4/1.5 | |
| | BP4060X | 0-40 | | | 4 | |
| 回转机构 Slewing | HR.100.180☆ | 0-0.6 | | | 5.5 | |
| | RVF4 | 0-0.6 | | | 4 | |
| 电源 Power | 380V (± 10%) /50Hz* | | | | | |

*请与制造商联系 contact us please

☆标准配置 standamrd configuration

平衡重 Counter weight

|  |  |  | PHZ2350 | PHZ1200 |
|--|---|---|---------|---------|
| 50m | 11.18m | 10600 | 4 | 1 |
| 43.4m | 11.18m | 9400 | 4 | |
| 36.8m | 11.18m | 8250 | 3 | 1 |



山东大汉建设机械股份有限公司

地址：山东省济南市章丘区明水经济开发区赭山工业园

电话：+86 (531) 83260789

网址：www.dhtj.com

邮编：250200

Shandong Dahan Construction Machinery Co.,Ltd.

Add : Zheshan Industrial Part,Mingshui Development
Zone,Zhangqiu,Jinan City,Shandong Province,China

TEL : +86 (531) 83260789

Web : [http:// www.dhtj.com](http://www.dhtj.com)

ZIP CODE : 250200